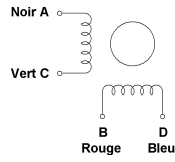
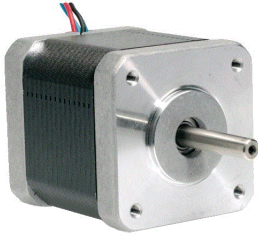


Stepper motor 17HD4409N



The advantages :
Smooth motion - Easy encoder installation

Associated products :

> Power supply
DR-120-24
DR-30-12 / 24
DR-60-24
DRP-240-24
DRP-480S-24
RS-100-24
RS-150-24
RS-75-24
SP-320-24

> Controller
FIRST PAP 40/5
NANO PAP 40/3
NANO PAP 40/3 avec

moons'

18 Ncm

Coil		Bipolaire
Step angle	°	1.8
Step anglaur accuracy	%	5
Nominal current per phase	A	1.5
Resistance per phase	Ohm	1.3
Inductance per phase	mH	2.1
Holding torque	Ncm	18
Detent torque	Ncm	1.2
Rotor inertia	gcm ²	38
Number of wires		4

Insulation class	B
Bearings	Roulements à billes 625ZZ
Magnets	NdFeB
Minimum ambient operating temperature	-20 °C
Maximum ambient operating temperature	+50 °C
Weight	230 g
Protection	IP30

